



BRISBANE CENTRAL STATE SCHOOL

Cnr St Paul's Tce & Rogers St, Spring Hill Qld 4000



newsletter

Tel: 3230 4333 | Fax: 3831 5469 | Absentee Line: 3230 4366 | Principal: [Graham Rickuss](#) | Email: principal@brisbanecentralss.eq.edu.au
Administration: admin@brisbanecentralss.eq.edu.au | P&C: pandc@brisbanecentralss.eq.edu.au | Web: www.brisbanecentralss.eq.edu.au

FROM THE PRINCIPAL'S DESK...

13 May 2016

Dear Parents/Carers,

NAPLAN

Well done to our students in Year 3 and 5 for successfully completing this year's NAPLAN testing, the *National Literacy and Numeracy Assessments*. I would like to commend our families, teachers and of course our students on the sensible, measured approach they adopted to an event that is often surrounded by media attention. Our classrooms were relaxed and positive, our students focused and happy.

NAPLAN serves a number of purposes from the broadest level – providing Federal and State Governments with some information about the outcomes of the Education Budget to the individual school – providing useful data about our teaching and learning programs, which when combined with other school based data is very useful, to the individual student and their family – providing us with four independent snapshots over a seven year period of a child's education. This information can be used with other information gathered across schooling, to ensure that children are progressing at appropriate rates.

NAPLAN is not a holistic snapshot of a child's learning nor a precursor to their future academic capability. It does not measure creativity nor the multiple strengths that persistent learners need to run the 'marathon of schooling'. It is expected that the reports will arrive at school for distribution in Term 3.

Preservice Teachers on Professional experience

We are fortunate to have three preservice teachers here until 3 June. We welcome the following teachers and we trust that they will have a positive experience at Brisbane Central:
Miss Dana Wylie working with 2S and Mr Stock,
Miss Rachel French working with 2W and Miss Wall, and
Miss Melinda Walmsley working with 6S and Mrs Somerville.

Dogs on School Grounds

It is wonderful to see the number of students and parents walking to and from school. Families are taking this opportunity to walk their dogs.

In the interest of safety, we ask parents to:

- * keep dogs off school verandahs and away from school buildings
- * pick up faeces
- * stay in control of the dog at all times.

Regards,

Graham Rickuss

2016 School Improvement Agenda

To improve student outcomes we will use the growth mindset strategies for:

1. Student Case Management in Reading to use data to differentiate for students.
2. Action Learning projects to gain an understanding of effective teaching strategies in writing.
3. Talk partners within the classroom to support learners.
4. Digital Literacies as a tool to engage learners.

UPCOMING DATES:

| CALENDAR | |
|---|--|
| Upcoming Dates: please check the website for the latest events. | |
| 17 May | Hot Chocolate Day |
| 18 – 20 May | Year 5 and 6 camp |
| Friday 20 May | Walk Safely to School Day |
| Regular events | |
| Monday | CASH PAYMENTS are accepted at the office 7.00AM – 9.00AM ONLY Otherwise please make payment via BPoint. <i>Homework Club cancelled this week. Please do not send your child.</i> |
| Tuesday | <i>Uniform Shop is open: 8:15am – 8:45am</i> <i>Parent English Class Excursion</i> <i>Assembly: 2:30pm</i> <i>Chinese Classes: please contact brisbanechinese.edu@gmail.com for more details</i> |
| Wednesday | <i>Senior Choir 8.15am in the music room</i> <i>Junior Choir 8am in Miss Wall's room</i> <i>Play and Stay: 3pm – 4pm</i> |
| Thursday | <i>Chess Club: 7:45am – 8.30pm</i> <i>MK13 Soccer After School Program: www.mk13soccer.com for more details</i> |
| Friday | <i>Playgroup 9am - 10am in the hall.</i> <i>Play and Stay: 3pm – 4pm</i> <i>Uniform Shop is open: 3:00pm – 3:30pm</i> |
| Saturday | <i>French Classes: please contact Les Petit Princes Les lespetitprinces.association@gmail.com</i> |

From the Head Of Curriculum

Coding Counts

Tehnology is part of every workplace and home, so our students need to be able to create digital solutions. Coding is telling a computer what you want it to do through step-by-step commands. At Brisbane Central we use Bee Bots and the Scratch program to do this. It is lots of fun. To find out more go to: <http://splash.abc.net.au/home#!/media/1214681/intro-to-scratch>

We use Scratch off line at school but it can be accessed online from any computer.

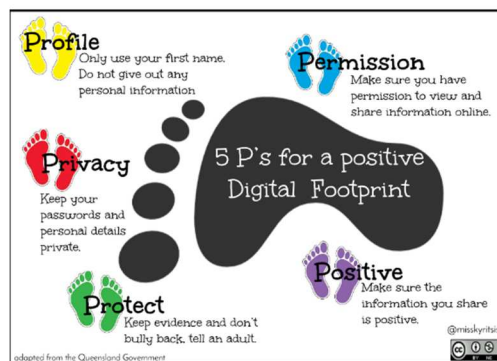
Cyber Safety

Discussing cyber safety with children is vital if they are to have safe and positive experiences online. Please be aware that Scratch has online sharing and chats, so please discuss these strategies with your child. For more cyber safety resources go to:

<http://behaviour.education.qld.gov.au/SiteCollectionDocuments/cybersafety/cyberbullying-cybersafetyprintfriendlyguide.pdf>

Remember to follow us on Twitter, https://twitter.com/Bris_Cent_SS, for links to educational resources and to find out what is happening within our school.

Happy learning,
Leesa-Maree Jedras
ljedr1@eq.edu.au



From the Literacy Coach

Bee Readers Reward: Rewards program for homework reading

We know that reading regularly is a great way to improve your child's reading ability. We would like to encourage and reward the children for reading at home. This term the children have a chance to be selected to choose a book for the school library. All they have to do is complete their homework reading for the week and they get a chance in a class draw. A winner is selected from each class at the end of term. Your child could be the lucky winner for their class. This rewards program is in addition to the library borrowing rewards program that rewards students for borrowing from the school library.

For simple yet effective tips to get improved learning from the 'homework reading' your child does see this clip. <https://www.youtube.com/watch?v=korfvEOQb14>

Maureen Kelly
Literacy Coach

Active School Travel

Star Class Trophy

The following class has won the **Star Class Trophy**, for the highest percentage of students actively travelling to school each week.

Week 3 was 4/5Y (80%)

To align with the Active School Travel awards run by the Brisbane City Council, in May the award will be going to the class that makes the largest increase in students actively travelling from the week before.

Largest Improvement 2S (20% from previous week)

National Walk Safely to School Day: Friday 20 May, 2016

Now in its 17th year, National Walk Safely to School Day (WSTSD) is an annual event when all Primary School children will be encouraged to walk and commute safely to school. It is a Community Event seeking to promote Road Safety, Health, Public Transport and the Environment.

All information can be found at: www.walk.com.au



Library News

Books for PNG and Fiji If you would like to donate books for this charity, please leave them in the boxes in the photocopy room underneath the library.

New Library Competition Children who borrow every week will go into the draw to choose a book from the Scholastic Bookclub at the end of each term. The book will have a name plate inside and be presented on parade. I encourage all children (and parents!) to remember to return their books each week so that they can borrow again and go into the competition. Remember you can borrow books during lunch or before and after school – we open at 8:30am and close at 3:15pm.

Social Media sites



Download the app
iTunes
Google Play
Windows Phone



Become a fan



Follow us on twitter

P and C News – contact us pandc@brisbanecentralss.eq.edu.au

We need your help, just once.

On the next page is a follow up to the form that we put in last week's P and C newsletter.

Thank you to those parents that have already returned the form. Please have a look at the upcoming events and select an activity that you can assist with, even for an hour or two. Your help is always appreciated.

Uniform Shop News

The opening days and hours are: **Every Tuesday 8.15 - 8.45 am**

Every Friday 3.00 – 3.30 pm

Payment in cash or mobile banking. Please contact Mahtab Nowrouzi at uniforms@brisbanecentralss.eq.edu.au if you require more information.

The next P & C meeting on Wednesday 1 June starting at 6.00pm in the French room. Everyone is welcome.



Brisbane Central State School P&C Association



INVITATION FOR SUPPORT

Please complete and return to your child's teacher or the school office
by **Monday the 16th of May**

The success of our school is dependent upon the efforts of many. We want your child to have access to the best school and education resources possible, such as iPads and upgraded library resources, improved eating areas and better sporting facilities. **In order to achieve these goals and more, we are asking parents to pledge to one of our fundraising activities a year.**

Please read through the listed fundraising activities mentioned below and return this form indicating which activity you could support and for approximately how long. Activities may require as little as an hour serving at the sausage sizzle or two hours at a working bee. **If every family can support just one fundraising activity we can help to achieve the needs of our school!**

Family Details

| | |
|-----------------|--------------------------|
| Parent Name(s): | Student Name(s) / Class: |
| Contact email | |
| Contact phone: | |

WHICH FUNDRAISING ACTIVITY WILL YOU TAKE PART IN?

Please note, these are proposed activities and dates may change.

| DATE | ACTIVITY | Please indicate the TIME (e.g. 9am) and/or for how long you can help ☺ |
|---|--|--|
| Sunday, June 12th Week 9, Term 2 | Working Bee Bring the kids, help for a few hours and enjoy the P&C thank you sausage sizzle afterwards. Any hour or two from 8:30am until 1:00pm. Sausage Sizzle from 1:00pm. | |
| July - Federal Election (tbc but likely 2nd July) | Election Sausage Sizzle Held in Assembly Hall. Any hour or two from 7:30am - 3:00pm. | |
| Sunday, August 28th | Car park duties for <i>Bridge to Brisbane</i> participants. From 5:30am- 2:00pm | |
| General | Selling Fundraising Chocolates Please indicate if your family would like to participate in selling a box chocolates to friends and family (not at the school). | |
| Date - tbc | Stay and Play Cake Stall Please indicate if you can bake some treats for a cake stall, and/or help set up/pack down and with selling. | |
| December - Term 4 | Christmas Concert Volunteers are required for set up in the morning for an hour or two and in the evening after the concert for pack up. | |

Thank you for your input into our P&C!

BECOME AN EDUCATOR WITH THE EAST BRISBANE FAMILY DAY CARE SERVICE



Operating a Family Day Care service allows mothers to earn an income while still nurturing their own children.



Mothers can become self employed, set their own hours and rates while operating their Family Day Care from home



These precious early moments of a child's life won't be missed as educators can care for their child while nurturing others



Educators can give back to the community by becoming a positive influence to families and their children



To find out about joining the East Brisbane Family Day Care service, call us on 07 3896 1300 or sao@ebcc.com.au

Property of EBCC East Brisbane Community Centre Inc. 2016

FREE

Triple P Seminar

Positive parenting in a nutshell for parents of 0 – 12 year olds

28
APRIL

The Power of Positive Parenting

For every parent who ever wondered: "Why does my child do that?" This seminar helps you understand the reasons kids do what they do, so you can guide their behaviour – and see more of the behaviour you like, and less of the behaviour you don't like.

12
MAY

Raising Confident, Competent Children

You can help your child become confident and successful at school and beyond. Find out way to encourage them be respectful and considerate, communicate and get on well with others, feel good about themselves and become independent problem solvers.

26
MAY

Raising Resilient Children

How can you help your child manage their emotions so they cope well with disappointment and in stressful situations? Get the strategies that will allow them to recognise positive and negative emotions – and deal with them in a healthy way.

Is this you?

Most of the time, parenting is fun. You know you are doing a good job. But there are times when things get a little tricky. Like when your toddler won't eat her dinner. Or your six year old won't pick up his toys. If only someone could give you some ideas to make those times easier! If this sounds like you, then a Triple P seminar may be right for you. Triple P is a parenting program for all families that provides practical answers to everyday concerns.

5 - 7 PM | LEVEL 2
170 LEICHHARDT ST
SPRING HILL Q 4004

CHILD CARE: Childcare is available onsite through Kids Academy for a nominal fee of \$5 per child. Bookings are essential.

Register

at www.triplep-parenting.net.au or call 0439 647 918 for more information.



1 Day Kids TV Presenter Workshop

*For 10 to 12yrs or 13 to 15yrs

Learn to Present on TV & Video!

Your on-camera introduction to TV Presenting. Includes your own audition/showreel

Limited time offer \$208 per person
20% DISCOUNT ONLY WHEN USING PROMOTIONAL CODE - EXPIRES 30JUNE2016
ONLY \$260
inc. GST

ONLINE BOOKING CODE:
-----CK20-----

Fox Studios Australia
Sydney, Brisbane
Gold Coast & Melbourne
TV TRAINING ACADEMY
International TV, Film & Communications